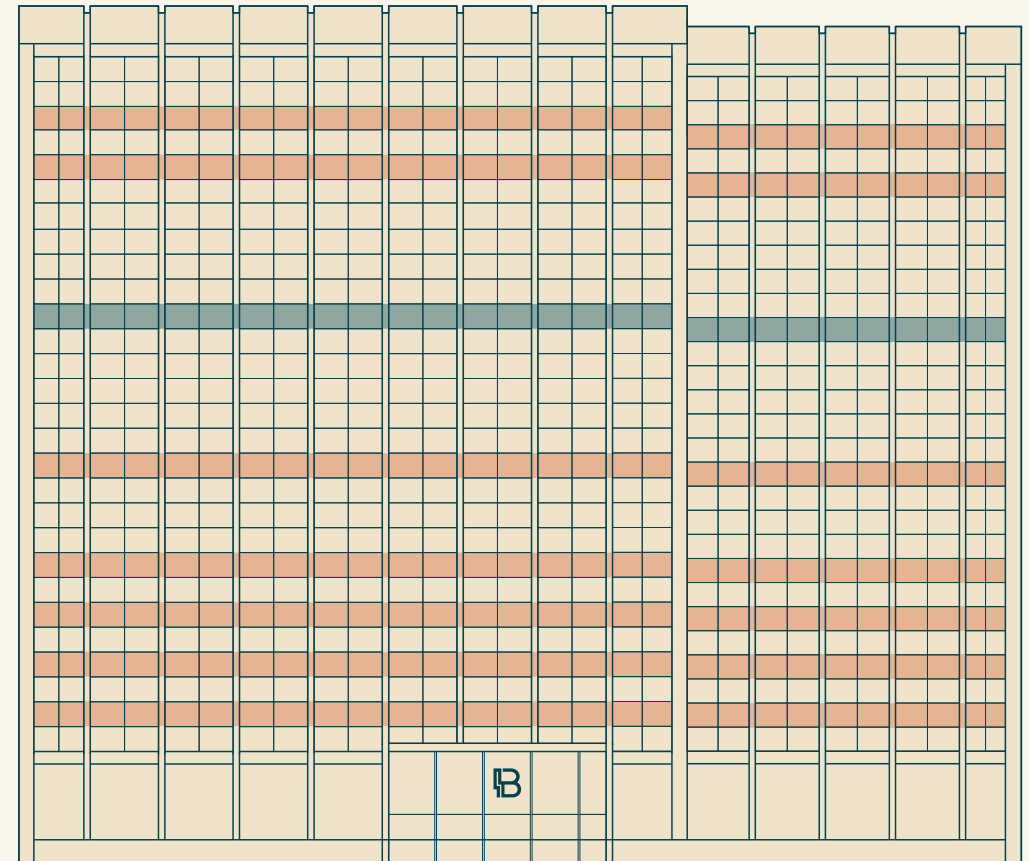


FLOOR	STATUS	SQ FT	SQ M
15	Cardiff Brunel House Centres Ltd	14,445	1,342.0
14	Starling Bank	14,445	1,342.0
13 *	Available	1,306 – 13,800	1,282.1
12	Available	13,836	1,285.4
11	Conveyancing Direct Ltd	14,445	1,342.0
10	Clockwise	14,445	1,342.0
9 (Suites)	Available	559 – 12,000	1,114.8
8	Starling Bank	14,445	1,342.0
7	Clockwise	14,445	1,342.0
6	Available	14,445	1,342.0
5	Starling Bank	14,445	1,342.0
4	Available	14,445	1,342.0
3	Available	14,445	1,342.0
2	Available	14,445	1,342.0
1 (Part)	Available	6,717	624.0
1 (Part)	Clockwise	5,651	525.0
G	Clockwise	7,510	697.7
	Kin & Ilk Café	1,311	121.8
	Sunflower Day Nursery	2,980	276.9
BUILDING TOTAL		222,700	20,689.7

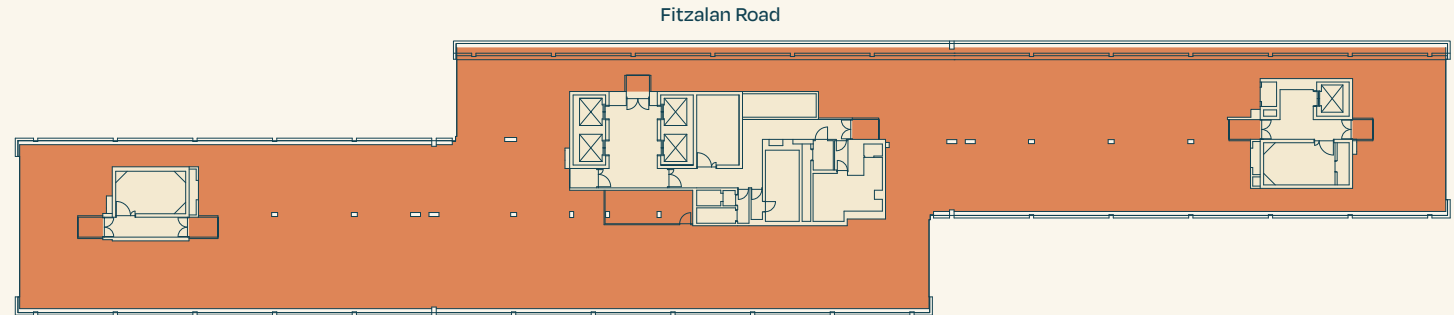
* Available as a whole or part floor.



Available floors ■ Suites ■

TYPICAL FLOOR

14,445 sq ft / 1,342.0 sq m



INDICATIVE SPACE PLAN

14,000 SQ FT / 1,300.6 SQ M

Workstations	168
8 person meeting rooms	04
Agile workstations	16
Breakout / collaboration areas	05
Teapoint	01



For indicative purposes only. Not to scale.

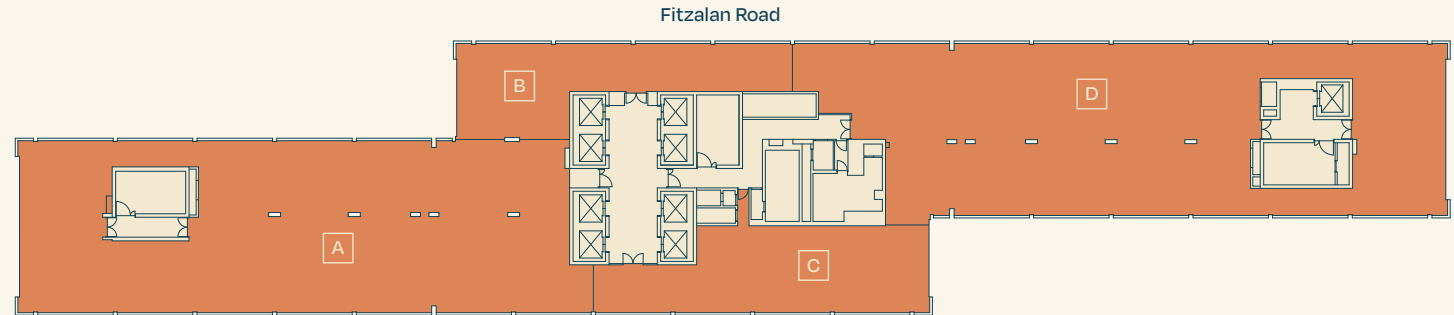
SPLIT OPTION

Suite A – 5,423 sq ft / 503.8 sq m

Suite B – 1,306 sq ft / 121.3 sq m

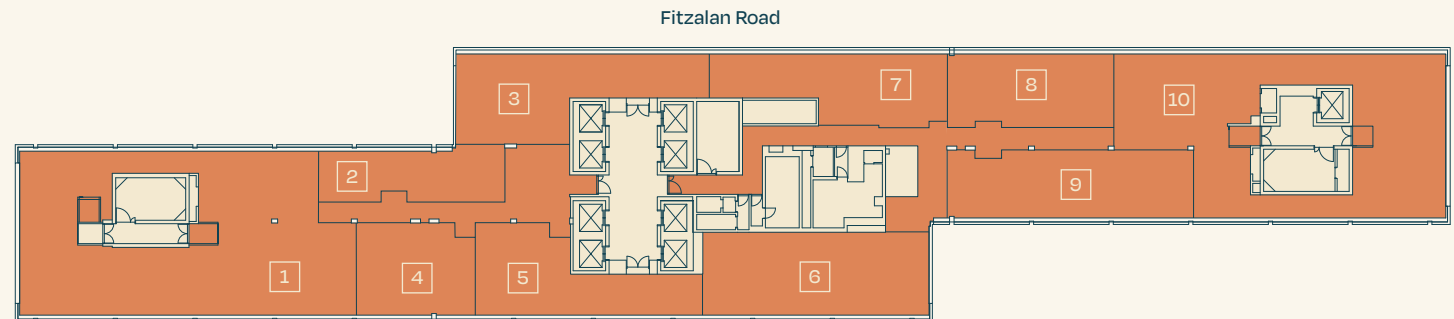
Suite C – 1,532 sq ft / 142.3 sq m

Suite D – 5,649 sq ft / 524.8 sq m



9TH FLOOR SUITES

10 suites – from 6 - 32 desks



For indicative purposes only. Not to scale.